

IT ROADBOOK

CREATING A ROBUST, SECURE, AND
SCALABLE IT FOUNDATION

SUPPORTING BUSINESS GROWTH & RESILIENCE

Key IT strategies & elements SMEs must prioritise in 2025 to remain competitive, agile, and secure.

2025



OUR CEO - STEVEN SHER

I understand the challenges businesses face in today's rapidly changing digital environment. It's no longer enough to simply adopt new technologies; it's about ensuring your IT infrastructure is secure, scalable, and capable of supporting long-term growth.

In 2025, SMEs will need to prioritise strategies that not only protect their operations but also drive efficiency and innovation.

This roadbook highlights the essential IT elements that will empower your business to stay ahead of the curve, foster resilience, and remain competitive in an increasingly complex digital landscape.

CEO

CYBERSECURITY

A NON-NEGOTIABLE PRIORITY

MULTI-FACTOR AUTHENTICATION (MFA)

MFA remains a critical line of defense. It ensures that even if credentials are compromised, additional verification (such as a phone prompt or biometrics) is required to access accounts or systems.

ZERO TRUST ARCHITECTURE

Zero Trust assumes no implicit trust. It enforces continuous verification, even within internal networks, limiting access to the minimum required for tasks. This model is gaining traction as organisations move away from outdated perimeter security.

EMPLOYEE TRAINING

With XX% of breaches linked to human error, cybersecurity training is essential. In 2025, this training is expected to evolve, integrating simulations and advanced threat detection to better prepare employees for sophisticated attacks like AI-driven phishing.

INCIDENT RESPONSE PLAN

Preparing for breaches with a detailed incident response plan ensures organisations can respond quickly and effectively. This includes identifying vulnerabilities, containing attacks, and recovering quickly from any data loss or system downtime.



CLOUD FIRST STRATEGY

HYBRID AND MULTI-CLOUD SOLUTIONS

Businesses are shifting towards hybrid and multi-cloud setups, utilising multiple cloud services for better flexibility, cost efficiency, and disaster recovery. These solutions allow businesses to avoid vendor lock-in and optimise their IT infrastructure.

CLOUD SECURITY & COMPLIANCE

As data migration to the cloud accelerates, ensuring that data is secure and complies with various regulations is a priority. Cloud providers now offer built-in security measures, but organisations must take an active role in monitoring and securing their environments.

DISASTER RECOVERY & BACKUP

Cloud-based disaster recovery systems are becoming the norm, offering automated backups, easy scalability, and fast recovery to minimise downtime. These systems are increasingly integrated with AI to predict and prevent issues before they occur.



ADVANCED DATA ANALYTICS

& AI INTEGRATION



BUSINESS INTELLIGENCE TOOLS

Tools powered by AI and machine learning are helping businesses analyse large datasets to extract actionable insights. These tools now incorporate predictive analytics to anticipate trends and guide strategic decision-making.

AI AND MACHINE LEARNING

AI is transforming industries by automating routine tasks, improving customer experiences, and enhancing security. Machine learning models are also becoming essential for predictive maintenance and demand forecasting in various sectors.

DATA GOVERNANCE

As the volume of data grows, effective governance frameworks are needed to ensure data is accurate, secure, and used responsibly. In 2025, organisations will focus on establishing clear data ownership, quality standards, and compliance with privacy laws.

MODERN WORKPLACE SOLUTIONS

UNIFIED COMMUNICATION TOOLS

Tools like Microsoft Teams, Slack, and Zoom will continue to dominate, offering integrated solutions for messaging, video conferencing, and collaboration. These platforms will be more tightly integrated with enterprise systems, enhancing overall productivity.

DIGITAL WORKSPACES

Digital workspaces, which centralise all work-related apps and data in one accessible platform, will be key for remote and hybrid teams. These workspaces streamline collaboration, improve employee engagement, and allow for greater flexibility in the work environment.



DEVICE MANAGEMENT

With more devices being used for work, organisations will prioritise endpoint security to protect sensitive data. Mobile Device Management (MDM) solutions will continue to evolve to ensure secure access to corporate resources from any device.



INFRASTRUCTURE MODERNISATION

EDGE COMPUTING

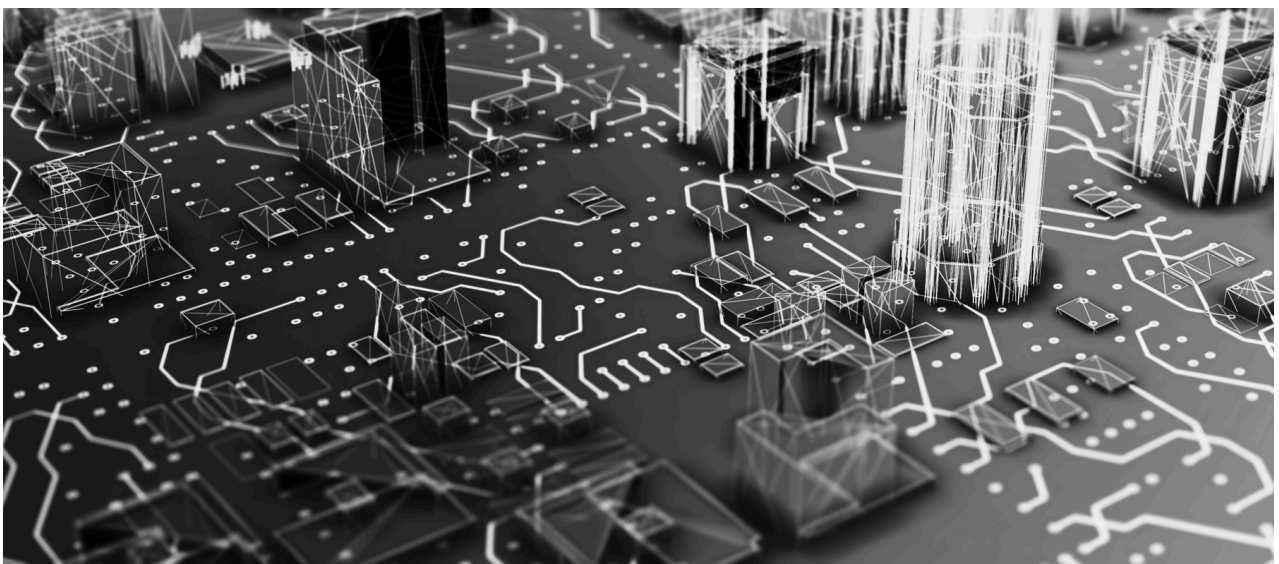
The shift to edge computing will grow as organisations handle more real-time data and move processing closer to data sources, such as IoT devices. This reduces latency and enhances performance for applications that require immediate data analysis.

SOFTWARE-DEFINED NETWORKING (SDN)

SDN allows for centralised control of network traffic, providing greater flexibility, scalability, and security. By decoupling hardware from networking software, businesses can more easily adapt their networks to changing demands.

IOT INTEGRATION

As IoT devices proliferate, their integration into business processes will be essential. IT infrastructures will need to support large-scale IoT networks, with a focus on managing data flow, security, and interoperability between diverse devices.



REGULATORY COMPLIANCE

& ETHICAL TECHNOLOGY USE

REGULAR AUDITS

Ongoing audits will be crucial for ensuring compliance with an ever-expanding set of regulations. These audits help detect vulnerabilities, verify compliance, and prepare for external scrutiny.

SUSTAINABILITY IN IT

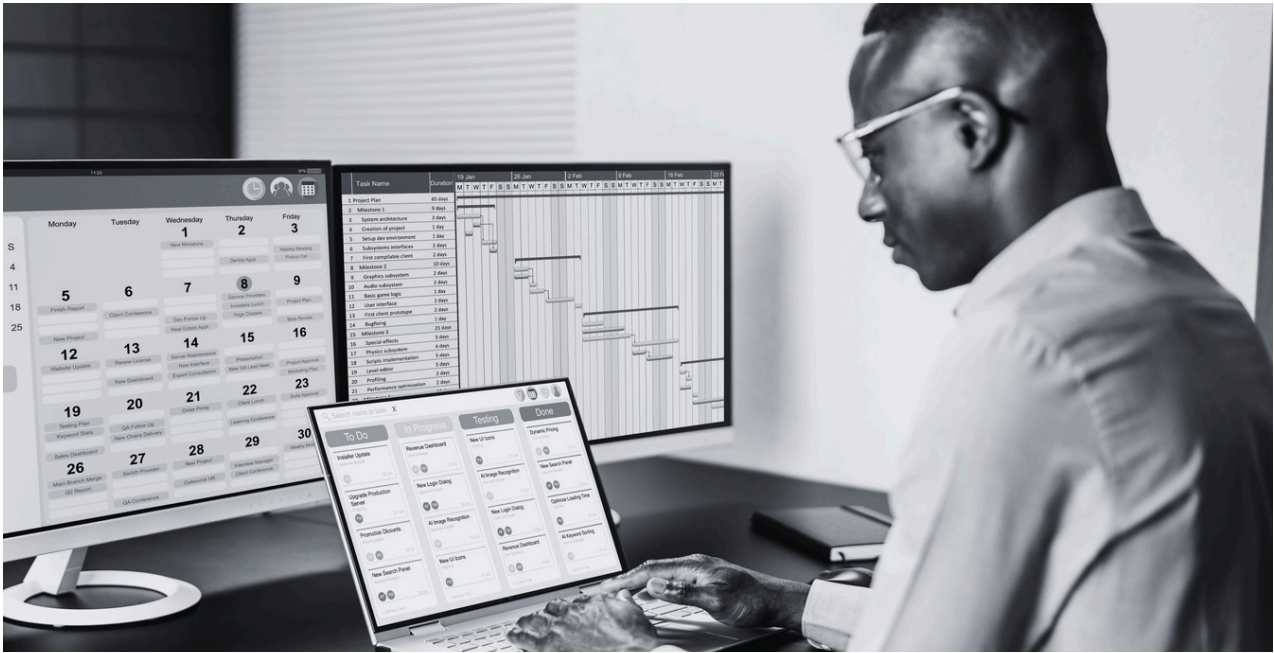
As environmental concerns grow, sustainability in IT practices will take center stage. Businesses will invest in energy-efficient data centers, optimise their cloud usage, and reduce e-waste, aiming to minimise their carbon footprint.

ETHICAL AI USAGE

With AI's rapid expansion, ethical concerns such as bias, transparency, and accountability are top of mind. Companies will implement frameworks to ensure AI is used responsibly, prioritising fairness and privacy.



IT SERVICE MANAGEMENT



SERVICE DESK IMPLEMENTATION

AI-driven service desks will become more common, providing faster and more efficient resolutions to IT issues. Automated responses and chatbots will assist with basic troubleshooting, freeing up IT staff for more complex tasks.

CHANGE MANAGEMENT PROCESSES

Managing changes to IT systems and infrastructure is critical to maintaining system integrity and minimising disruptions. Effective change management will ensure smoother transitions and better user adoption.

MONITORING & PERFORMANCE ANALYTICS

Real-time monitoring tools that leverage AI to predict and prevent system failures will be increasingly relied upon. Performance analytics will help identify inefficiencies and optimise workflows.

CYBER RESILIENCE

& BUSINESS CONTINUITY PLANNING

BUSINESS CONTINUITY PLAN (BCP)

As businesses face an increasing array of cyber threats and natural disasters, having a comprehensive BCP in place is crucial. This plan ensures that essential services continue and operations are quickly restored following disruptions.

RESILIENT IT ARCHITECTURE

To ensure continuity, IT infrastructures will need to be built for resilience. This includes multi-layered security, redundant systems, and the ability to quickly adapt to changing circumstances.

REGULAR SIMULATION EXERCISES

Cyber resilience will be bolstered by routine simulations of potential cyberattacks or disaster scenarios. These exercises help test the effectiveness of response plans, ensuring that teams are prepared when real incidents occur.



CONTACT US

TO ENSURE BUSINESS IT
GROWTH & RESILIENCE.



+27 21 673 6756



info@techtron.co.za



www.techtron.co.za



